



Capacity / Centre of gravity:
10.000 kg / 600 mm - 12.000 kg / 600 mm

Gumming: super elastic twins

Extremely compact machine, ideal to handle heavy loads in small spaces



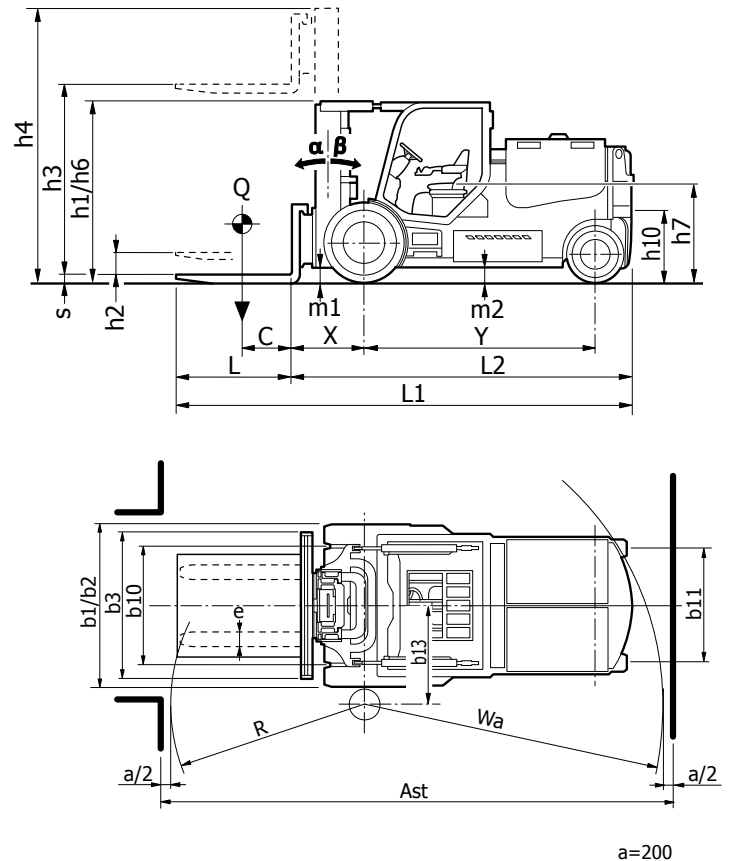
SERIES



KZ100 H
KZ120 H

MAIN FEATURES

- Capacity / Centre of gravity:
10.000 kg / 600 mm - 12.000 kg / 600 mm
- Voltage: 96 V
- Tyres: super elastic twins
- Motors: AC
- Brakes: electric
- Travel speed: 12 km/h
- Lifting speed: 0.33 m/s
- Battery 96 V – Maximum capacity 1680 Ah
- Multifunction display easy info (MDE)
- High positioned tilt cylinders



THE BENEFITS OF CHOOSING CARER

Designed for handling heavy loads inside containers, the KZ 100-120 H offers high performance and reliable manoeuvrability thanks to a system of cameras that allows you to get maximum visibility to the rear in the difficult conditions when handling loads in containers.

Operator's comfort

The driver's seat is spacious and comfortable. The levers are easy to use. The steering wheel has a tiltable and telescoping steering column. The electronic implant allows you to set up the parameters of operation by allowing to balance performances and autonomy of the battery to obtain the most suitable configuration to the use and sensibility of the operator's guide.

Specifications

The electric motors are high



performance version and supply high torque. The power is managed electronically in this series of trucks inspired, speed and manoeuvrability are unmatched. The braking system, type oil-bath is used to lower maintenance cost and can be used in many applications. The braking system is very effective due to the fact that the braking is applied by slowing down on the drive motor, in this way the current that is regenerated can be reused and the manner of braking can be adjusted to the drivers requirements.

When using the directional lever the regenerative braking will be increased to change direction in a faster way.

Easy and safe handling, the machines are fitted with a sturdy axle, designed by Carer, which ensures very sharp steering of the trucks in combination with a soft and accurate steering due to the separate steering motor and pump.



			C.A.R.E.R. Srl	
			KZ100H	KZ120H
IDENTIFICATION	1.1	Manufacturer		
	1.2	Manufacturer's type designation		
	1.3	Drive	electric	electric
	1.4	Operator type	seat	seat
	1.5	Load capacity / rated load	Q (t)	10 12
	1.6	Load centre distance	C (mm)	600 600
	1.8	Load distance	X (mm)	830 ⁽¹⁾ / 870 ⁽¹⁾ / 870 ⁽¹⁾ / 870 ⁽¹⁾
	1.9	Wheelbase	Y (mm)	2850 2850
WEIGHTS	2.1	Weight	(kg)	15000 15390
	2.2	Axle loading, laden front / rear	(kg)	22000 / 3000 25452 / 1938
	2.3	Axle loading, unladen front / rear	(kg)	6980 / 8020 7260 / 8130
WHEELS	3.1	Tyres type	SEG	SEG
	3.2	Tyre size, front	10.00-20	10.00-20
	3.3	Tyre size, rear	250 / 15	250 / 15
	3.5	Wheels, number front rear (x = driven wheels)	4X/2	4X/2
	3.6	Track width, front	b10 (mm)	1470 1470
	3.7	Track width, rear	b11 (mm)	1400 1400
DIMENSIONS	4.1	Tilt of mast / fork carriage forward / backward	α/β (°)	7/8 ⁽²⁾ 7/8 ⁽²⁾
	4.2	Closed mast height	h1 (mm)	2230 2230
	4.3	Free lift	h2 (mm)	750 750
	4.4	Lift (standard mast)	h3 (mm)	2100 2100
	4.5	Height, mast extended	h4 (mm)	3550 3550
	4.7	Height of overhead guard	h6 (mm)	2230 2230
	4.8	Seat height	h7 (mm)	1150 1150
	4.12	Coupling height	h10 (mm)	860 860
	4.19	Overall length	L1 (mm)	5310 5350
	4.20	Length to face of forks	L2 (mm)	4110 4150
	4.21	Overall width	b1/b2 (mm)	2000 2000
	4.22	Fork dimensions	ExSxL (mm)	200x70x1200 200x70x1200
	4.23	Fork carriage iso 2328/30, FEM/A,B	5A	CARER
	4.24	Fork-carriage width	b3 (mm)	1800 1800
	4.31	Ground clearance, laden, below mast	m1 (mm)	200 200
	4.32	Ground clearance, centre of wheelbase	m2 (mm)	180 180
	4.33	Aisle width for pallets 1000x1200 crossways	Ast (mm)	5785 5820
	4.34	Aisle width for pallets 800x1200 lengthways	Ast (mm)	5985 6020
	4.35	Turning radius	Wa (mm)	3765 3765
	4.36	Internal turning radius	b13 (mm)	1400 1400
PERFORMANCE	5.1	Travel speed, laden / unladen	(km/h)	12 / 12 11 / 11
	5.2	Lift speed, laden / unladen	(m/s)	0.21 / 0.33 0.19 / 0.3
	5.3	Lowering speed, laden / unladen	(m/s)	0.4 / 0.35 0.4 / 0.3
	5.5	Drawbar pull, laden / unladen (S2 60')	(N)	6400 / 7200 5800 / 6600
	5.6	Max. drawbar pull, laden / unladen (S2 5')	(N)	15900 / 16700 15300 / 16100
	5.7	Gradeability, laden / unladen (S2 30')	(%)	5.2 / 9.8 4 / 7.9
	5.8	Max. gradeability, laden / unladen (S2 5')	(%)	8 / 14 6.5 / 12
	5.9	Acceleration time, laden / unladen (10 m)	(s)	6.5 / 6.2 7.2 / 6.8
	5.10	Service brake: mech./hydr./electr.	electric	electric
MOTOR / BATT.	6.1	Drive motor rating (S2 60')	(kW)	27 27
	6.2	Lift motor rating (S3 20%)	(kW)	45 45
	6.4	Battery voltage	U (V)	96 96
	6.4.1	Rated capacity	K5 (Ah)	1550 / 1680 (TENSOR) 1550 / 1680 (TENSOR)
	6.5	Battery weight minimum/maximum	(kg)	4500 / 4900 4500 / 4900
OTHERS	8.1	Type of drive control	inverter	inverter
	8.2	Operating pressure for attachments	(bar)	160 160
	8.4	Sound level at the driver's ear	(dBA)	- -

(1)With side-shifter integrated in the mast. (2) Depending on kind of mas.t

Wheels tyre legend: SE super elastic - SEGEM super elastic twins - C cushion - L pneumatic - VLK vulkolan: for tires NO MARKING - OIL RESISTANT, please contact Carer.

The performance data refer to a forklift truck in perfect working condition, with battery weight corresponding to the values given in 6.5

In accordance with VDI Guideline 2198 this specification sheet provides details of the standard truck only. Non-standard tyres, different masts, optional equipment, etc. may result in different values.

The Carer products and specifications are subject to change without notice



C.A.R.E.R. Srl
via Copernico 13
48033 Cotignola (RA) Italy
phone +39 0545 1938010
fax +39 0545 908070
www.carerforklift.com
info@carerforklift.com

follow us on 