

carer
Electric Forklift Trucks

Capacity / Centre of gravity:
8,000kg / 900 mm
10,000 kg / 600 mm

Voltage: 96 V

Very high performances for heavy duty applications

F

SERIES



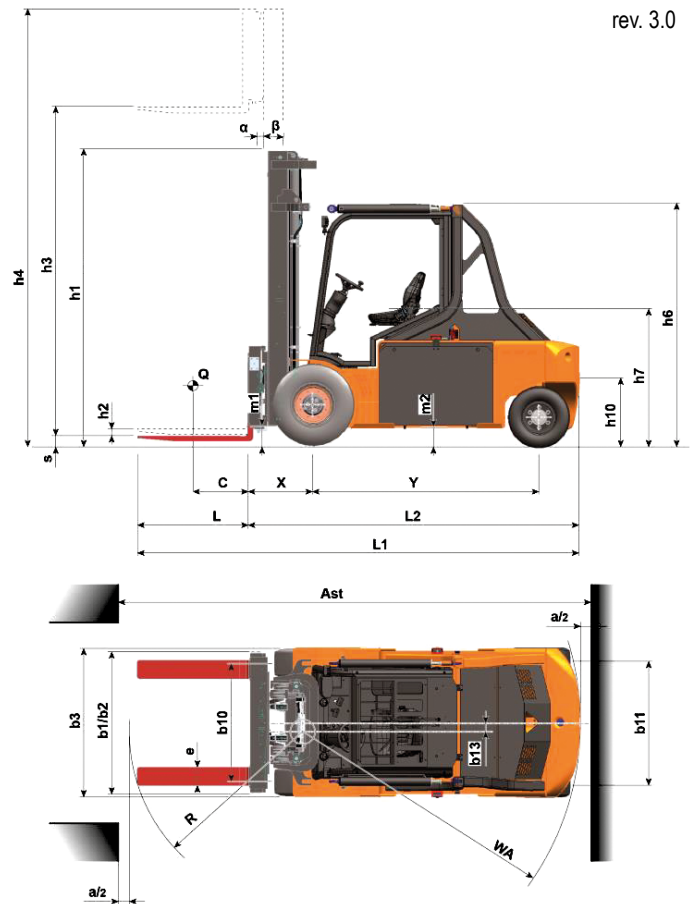
F 80/900 HD²
F 100/600 HD²

GENERAL FEATURES

- Capacity / Centre of gravity:
8,000 kg / 900 mm
10,000 kg / 600 mm
- Voltage: 96 V
- Tyres: twin superelastic
- 2 front drive motors AC
- Electric Brakes
- Travel speed: 18 km/h
- Lifting speed: 0.36 m/s
- Battery 96 V – Maximum capacity 1475 Ah
- Advanced multifunction digital display (AMD)
- Reversing Camera
- Automatic Parking Brake
- High tilt cylinders
- Automatic Cornering Speed Reduction System

AVAILABLE CONTAINER VERSION KF 80/900-100/600 HD²

Total height = 2235 mm



THE BENEFITS OF CHOOSING CARER

Designed to withstand long operating time at very high-performance levels, F 80/900 - 100/600 HD² (Heavy Duty) can be considered the highest expression of the principles and technology developed by Carer over the years.

Better energy efficiency of the new front axle group developed by Carer that consists of two twin traction motors and two reduction gears, generates an energy saving over 25% on the VDI cycle.

The ergonomic design of the driving position, the separate cabin mounted on silent-blocks and anti-vibration system guarantee the maximum driver comfort reducing the fatigue during the long working shifts.

Technical Features

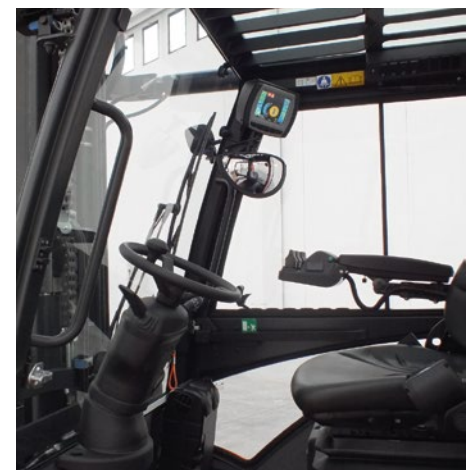
Fitted with two 15 kW high RPM and high torque traction motors and a 45 kW AC hoist motor, this forklift truck can reach a traction speed of 18 km/h

and a lifting speed of 0,36 m/s. The excellent acceleration has no equal nor between forklifts electric that internal combustion. The battery replacement is easy and fast and it requires the minimum of time and effort to change.

The steering axle and compact design manage maneuverability and performance even in confined interior spaces.

The advanced multifunction display (AMD) allows to customize the forklift settings according to operator applications and routines by achieving a balance between high performance and long operating time.

The integrated reversing camera on the LCD display is automatically connected to reverse, so it helps the driver to maneuver.



		C.A.R.E.R. Srl			
CARATTERISTICHE	1.1	Manufacturer			
	1.2	Manufacturer's type designation	F80/900 HD²	F100 HD²	
	1.3	Drive	electric	electric	
	1.4	Operator type	seat	seat	
	1.5	Load capacity/rated load	Q (t)	8	10
	1.6	Load centre distance	C (mm)	900	600
	1.8	Load distance	X (mm)	700 (1) (2)	720 (1) (2)
	1.9	Wheelbase	Y (mm)	2630	2630
	RUOTE	2.1	Weight	(kg)	14175
2.2		Axle loading, laden front / rear	(kg)	20356 / 1819	22678 / 1747
2.3		Axle loading, unladen front / rear	(kg)	7490 / 6685	7660 / 6765
WHEELS	3.1	Tyres type		SEG	SEG
	3.2	Tyre size, front		8.25-15	300-15
	3.3	Tyre size, rear		315/45-12	315/45-12
	3.5	Wheels, number front rear (x = driven wheels)		4X/2	4X/2
	3.6	Track width, front	b10 (mm)	1460	1460
	3.7	Track width, rear	b11 (mm)	1215	1215
	DIMENSIONS	4.1	Tilt of mast / fork carriage forward / backward	α/β (°)	5.5/6(2)
4.2		Closed mast height	h1 (mm)	2900	2950
4.3		Free lift	h2 (mm)	0	0
4.4		Lift (standard mast)	h3 (mm)	3400	3400
4.5		Height, mast extended	h4 (mm)	4800	4850
4.7		Height of overhead guard	h6 (mm)	2420	2420
4.8		Seat height	h7 (mm)	1330	1330
4.12		Coupling height	h10 (mm)	465	465
4.19		Overall length	L1 (mm)	5340	4960
4.20		Length to face of forks	L2 (mm)	3740	3760
4.21		Overall width	b1/b2 (mm)	1900	2000
4.22		Fork dimensions	exsXL (mm)	200x70x1600	200x60x1200
4.23		Fork carriage iso 2328/30, FEM/A,B		4A	5A
4.24		Fork-carriage width	b3 (mm)	1800	1800
4.31		Ground clearance, laden, below mast	m1 (mm)	180	180
4.32		Ground clearance, centre of wheelbase	m2 (mm)	165	165
4.33	Aisle width for pallets 1000x1200 crossways	Ast (mm)	5350	5420	
4.34	Aisle width for pallets 800x1200 lengthways	Ast (mm)	5550	5420	
4.35	Turning radius	Wa (mm)	3450	3500	
4.36	Internal turning radius	b13 (mm)	1150	1250	
PERFORMANCE	5.1	Travel speed, laden / unladen	(km/h)	17 / 18	16 / 18
	5.2	Lift speed, laden / unladen	(m/s)	0.25 / 0.36	0.22 / 0.32
	5.3	Lowering speed, laden / unladen	(m/s)	0.43 / 0.35	0.38 / 0.31
	5.5	Drawbar pull, laden / unladen (S2 60°)	(N)	5600 / 6300	5000 / 5650
	5.6	Max. drawbar pull, laden / unladen (S2 5°)	(N)	20700 / 21500	18600 / 19350
	5.7	Gradeability, laden / unladen (S2 30°)	(%)	5 / 9	4.5 / 8
	5.8	Max. gradeability, laden / unladen (S2 5°)	(%)	9.2 / 16	8.3 / 14.5
	5.9	Acceleration time, laden / unladen (10 m)	(s)	7 / 5.2	6.2 / 4.7
	5.10	Service brake: mech./hydr./electr.		electric	electric
	MOTOR / BATT.	6.1	Drive motor rating (S2 60°)	(kW)	2x15
6.2		Lift motor rating (S3 20%)	(kW)	45	45
6.4		Battery voltage	U (V)	96	96
6.4.1		Rated capacity	K5 (Ah)	1395 / 1475 (TENSOR)	1395 / 1475 (TENSOR)
6.5		Battery weight minimum/maximum	(kg)	4050 / 4200	4050 / 4200
OTHERS	8.1	Type of drive control		inverter	inverter
	8.2	Operating pressure for attachments	(bar)	200	200
	8.4	Sound level at the driver's ear	(dBA)	-	-

VDI 2198

Rev1 30/03/20

(1)With side-shifter integrated in the mast

(2)Depending on kind of mast

Wheels tyre legend: SE super elastic - SEGEM super elastic twins - C cushion - PN pneumatic - VLK vulkolan: for tires NO MARKING - OIL RESISTANT, please contact Carer

The performance data refer to a forklift truck in perfect working condition, with battery weight corresponding to the values given in 6.5

In accordance with VDI Guideline 2198 this specification sheet provides details of the standard truck only. Non-standard tyres, different masts, optional equipment, etc. may result in different values.

The C.A.R.E.R. products and specifications are subject to change without notice



C.A.R.E.R. Srl
via Copernico 13
48033 Cotignola (RA) Italy
phone +39 0545 1938010
fax +39 0545 908070
www.carerforklift.com
info@carerforklift.com

follow us on 