

carer
Electric Forklift Trucks

Capacity 800 -1000 kg

Load centre 500 mm

Voltage 48 V

Electric power steering

Extremely compact, powerful, maneuverable
and comfortable for the operator


N
SERIES



N 08-10

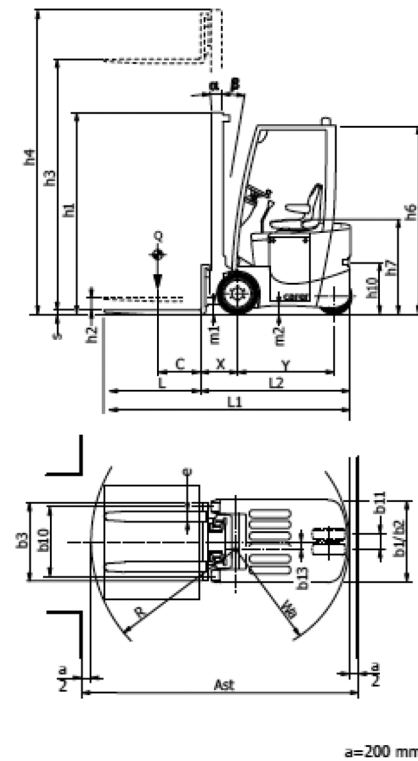
carer
Electric Forklift Trucks

C.A.R.E.R. Srl
via Copernico 13
48033 Cotignola (RA) Italy
phone +39 0545 1938010
fax +39 0545 908070
www.carerforklift.com
info@carerforklift.com

follow us on 

MAIN FEATURES

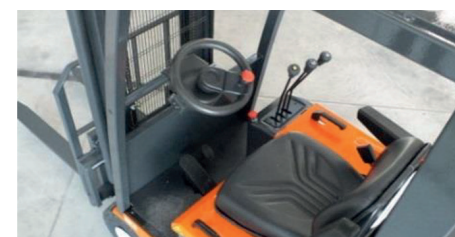
- Capacity: 800-1000 kg
 - Load centre: 500 mm
 - Voltage: 48 V
 - Tyres: SE-C
 - Motors: AC
 - Brakes: electric
 - Automatic parking brake
 - Travel speed: 13 km/h
 - Lifting speed: 0.4 m/s
 - Battery: 48 V – Maximum capacity: 375 Ah
-
- 2 front traction motors
 - Rear twin tyres
 - Multifunction display



THE BENEFITS OF CHOOSING CARER



Really compact forklift 85 cm width, voltage 48 V, 2 AC traction motors, electric steering, rear twin super elastic tyres are some of the features that make the series N 08-10 the most advanced in the



market. The compact dimensions and two front traction powerful motors allow you to operate in narrow spaces inside containers or wagons, and to work on ramps even in low-grip conditions.

The new technology used for the electric steering system allows to automatically reduce the speed while turning, to adjust the sensitivity of the steering wheel and to optimize the energy consumption.

The comfortable driving position,

the high visibility masts and the proper display position, showing all the functions and the diagnostics of the forklift, allow the driver to have under control all the features taking always care of the load and also to adjust the seat position to the specific needs of every operator.

The electronic system advanced and AC motors and without maintenance, are protected against dust and water infiltration.

The battery with capacity up to 375 Ah and the energy regeneration system guarantee long working cycles and to reduce the recharging intervals.

A wide range of accessories allows you to customize the forklift to specific handling requirements.

N 08
N 10



		C.A.R.E.R. Srl			
		N 08	N 10		
IDENTIFICATION	1.1	Manufacturer			
	1.2	Manufacturer's type designation			
	1.3	Drive	electric	electric	
	1.4	Operator type	seat	seat	
	1.5	Load capacity/rated load	Q (t)	0.8	1
	1.6	Load centre distance	C (mm)	500	500
WEIGHTS	1.8	Load distance	X (mm)	365 ⁽¹⁾⁽²⁾	365 ⁽¹⁾⁽²⁾
	1.9	Wheelbase	Y (mm)	1000	1000
	2.1	Weight	(kg)	2400	2600
WHEELS	2.2	Axle loading, laden front / rear	(kg)	2800 / 400	3200 / 400
	2.3	Axle loading, unladen front / rear	(kg)	1310 / 1090	1340 / 1260
	3.1	Tyres type		C-SE	C-SE
	3.2	Tyre size, front		413x152 16x6-8	413x152 16x6-8
	3.3	Tyre size, rear		375x110 15x4½-8	375x110 15x4½-8
	3.5	Wheels, number front rear (x = driven wheels)		2X / 2	2X / 2
	3.6	Track width, front	b10 (mm)	698 698	698 698
DIMENSIONS	3.7	Track width, rear	b11 (mm)	160 160	160
	4.1	Tilt of mast / fork carriage forward / backward	α/β (°)	5/5 ⁽²⁾	5/5 ⁽²⁾
	4.2	Closed mast height	h1 (mm)	2190	2190
	4.3	Free lift	h2 (mm)	0	0
	4.4	Lift (standard mast)	h3 (mm)	3200	3200
	4.5	Height, mast extended	h4 (mm)	3790	3790
	4.7	Height of overhead guard	h6 (mm)	1975	1975
	4.8	Seat height	h7 (mm)	980	980
	4.12	Coupling height	h10 (mm)	440	440
	4.19	Overall length	L1 (mm)	2535	2535
	4.20	Length to face of forks	L2 (mm)	1535	1535
	4.21	Overall width	b1/b2 (mm)	850 850	850 850
	PERFORMANCE	4.22	Fork dimensions	BxDxL (mm)	100x35x1000
4.23		Fork carriage iso 2328/30, FEM/A,B		2A	2A
4.24		Fork-carriage width	b3 (mm)	800	800
4.31		Ground clearance, laden, below mast	m1 (mm)	50	50
4.32		Ground clearance, centre of wheelbase	m2 (mm)	75	75
4.33		Aisle width for pallets 1000x1200 crossways	Ast (mm)	2840	2840
4.34		Aisle width for pallets 800x1200 lengthways	Ast (mm)	2960	2960
4.35		Turning radius	Wa (mm)	1150	1150
4.36		Internal turning radius	b13 (mm)	0	0
5.1		Travel speed, laden / unladen	(km/h)	12 / 13	11 / 12
5.2	Lift speed, laden / unladen	(m/s)	0.3 / 0.4	0.28 / 0.4	
5.3	Lowering speed, laden / unladen	(m/s)	0.5 / 0.4	0.5 / 0.4	
5.5	Drawbar pull, laden / unladen (S2 60°)		2200 / 2400	2200 / 2400	
5.6	Max. drawbar pull, laden / unladen (S2 5°)	(N)	5500 / 5700	5400 / 5700	
5.7	Gradeability, laden / unladen (S2 30°)	(%)	9.5 / 14.4	8.9 / 13.1	
5.8	Max. gradeability, laden / unladen (S2 5°)	(%)	16.6 / 24.4	15.5 / 22.3	
5.9	Acceleration time, laden / unladen (10 m)	(s)	5.5 / 4.5	5.7 / 4.7	
5.10	Service brake		hydr. / electr.	hydr. / electr.	
MOTOR / BATT.	6.1	Drive motor rating (S2 60°)	(kW)	2x2.2	2x2.2
	6.2	Lift motor rating (S3 20%)	(kW)	5.5	5.5
	6.4	Battery voltage	U (V)	48	48
	6.4.1	Rated capacity	K5 (Ah)	315 / 375	315 / 375
	6.5	Battery weight minimum/maximum	(kg)	560 / 600	560 / 600
OTHERS	8.1	Type of drive control		inverter	inverter
	8.2	Operating pressure for attachments	(bar)	180	180
	8.4	Sound level at the driver's ear	(dBA)	-	-

VDI 2198

Rev 01 24/02/2016

(1) With side-shifter integrated in the mast. (2) Depending on kind of mast.

Wheels tyre legend: SE super elastic - SEGEM super elastic twins - C cushion - L pneumatic - VLK vulkolan: for tyres NO MARKING - OIL RESISTANT, please contact Carer.

The performance data refer to a forklift truck in perfect working condition, with battery weight corresponding to the values given in 6.5.

In accordance with VDI Guideline 2198 this specification sheet provides details of the standard truck only. Non-standard tyres, different masts, optional equipment, etc. may result in different values.

The C.A.R.E.R. products and specifications are subject to change without notice.