

carer
Electric Forklift Trucks

Capacity / Centre of gravity:
12.000 kg - 16.000 kg / 600 mm

Voltage: 120 V

Hydraulic tilting cabin for a quick
and easy battery change

Maximum operator comfort

R
SERIES



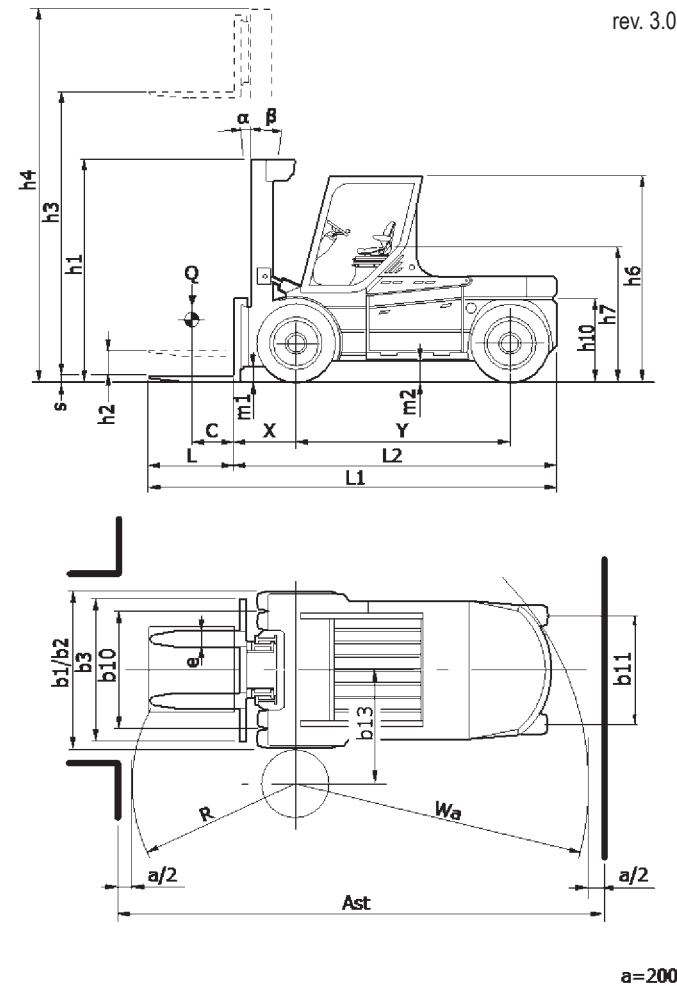
R 120
R 160

carer
Electric Forklift Trucks

C.A.R.E.R. Srl
via Copernico 13
48033 Cotignola (RA) Italy
phone +39 0545 1938010
fax +39 0545 908070
www.carerforklift.com
info@carerforklift.com
follow us on 

GENERAL FEATURES

- Capacity / Centre of gravity: 12.000 - 16.000 kg / 600 mm
- Voltage: 120 V
- Tyres: Twin Superelastic
- Motors: AC
- Brakes: oil immersed
- Travel speed: 12 km/h
- Lifting speed 0.38 m/s
- Battery 120 V - Maximum capacity 1680 Ah
- Advanced multifunction display (AMD)
- Low tilt cylinders
- Reversing Camera
- Tilting cabin



a=200

THE BENEFITS OF CHOOSING CARER

The R120-160 forklift trucks are the maximum expression of the force and power of Carer's standard range of forklift trucks. They can handle loads weighing up to 16,000 kg.

Fitted with a tilting cabin to ensure the battery can be quickly and easily changed this forklift truck combines high performance, long operating time and compact size.

Specifications

The twin superelastic tyres make this this range of forklift trucks ideal for outdoor use.

The driver's seat is carefully designed to offer maximum operator comfort: the steering wheel and seat have wide adjustments and perfect visibility in every direction.

The electronic traction and lifting control ensure silence and maximum motor performance.

Moreover, they are fitted close to and maximum motors performance. Motor ensuring the higher efficiency of the electrical system

Technical features

The R120-160 series trucks have a sturdy axle that allows for very wide steering angles.

The oil-bath brakes ensure maximum effectiveness of the braking system and reduce maintenance costs.

The intensity of the electric braking with energy recovery can

be adjusted based on operator preferences.

The hydraulic hoisting of the driver's cabin makes it easier to take out the battery, which is divided into two boxes placed side by side and located between the forklift truck wheels.



R 120 R 160

		C.A.R.E.R. Srl		
		R 120	R 160	
IDENTIFICATION	1.1	Manufacturer		
	1.2	Manufacturer's type designation		
	1.3	electric	electric	
	1.4	seat		
	1.5	Q (t)	12	16
	1.6	C (mm)	600	600
	1.8	X (mm)	910 ⁽¹⁾⁽²⁾	950 ⁽¹⁾⁽²⁾
	1.9	Y (mm)	3020	3020
	WEIGHTS	2.1	(kg)	20025
2.2		(kg)	29460 / 2565	36970 / 3370
2.3		(kg)	11460 / 8565	12760 / 11580
WHEELS	3.1	SEG		
	3.2	12.00-20		
	3.3	12.00-20		
	3.5	4X / 2		
	3.6	b10 (mm)	1840	1840
	3.7	b11 (mm)	1785	1785
	DIMENSIONS	4.1	alpha/beta (°)	3 / 7 ⁽²⁾
4.2		h1 (mm)	2900	3350
4.3		h2 (mm)	0	0
4.4		h3 (mm)	3400	3400
4.5		h4 (mm)	5000	5250
4.7		h6 (mm)	2830	2830
4.8		h7 (mm)	1750	1750
4.12		h10 (mm)	880	880
4.19		L1 (mm)	5820	5860
4.20		L2 (mm)	4620	4660
4.21		b1/b2 (mm)	2485	2485
4.22		ExSxL (mm)	200x70x1200	200x80x1200
4.23		CARER		
4.24		b3 (mm)	2000	2000
4.31		m1 (mm)	200	200
4.32		m2 (mm)	300	300
4.33		Ast (mm)	6710	6750
4.34		Ast (mm)	6910	6950
4.35		Wa (mm)	4600	4600
4.36	b13 (mm)	2130	2130	
PERFORMANCE	5.1	(km/h)	12 / 12	11 / 11
	5.2	(m/s)	0.29 / 0.38	0.24 / 0.32
	5.3	(m/s)	0.4 / 0.4	0.4 / 0.4
	5.5	(N)	10900 / 13000	9500 / 12250
	5.6	(N)	27300 / 29400	25900 / 28500
	5.7	(%)	8 / 13	6.2 / 11
	5.8	(%)	10.5 / 16	9 / 15.5
	5.9	(s)	6 / 5	6.7 / 5.1
	5.10	hydraulic / electric		
	MOTOR / BATT	6.1	(kW)	35
6.2		(kW)	2x35	2x35
6.4		U (V)	120	120
6.4.1		K5 (Ah)	1250 / 1400 / 1550 / 1680	1400 / 1550 / 1680
6.5		(kg)	4450 / 5700	5300 / 5700
OTHERS	8.1	inverter		
	8.2	(bar)	160	160
	8.4	(dBA)	-	-

VDI 2198

Rev10 06/10/2016

(1) With side-shifter integrated in the mast (2) Depending on kind of mast

Wheels tyre legend: SE super elastic - SEGEM super elastic twins - C cushion - PN pneumatic - VLK vulkollan®: for tires NO MARKING - OIL RESISTANT, please contact CARER. The performance data refer to a forklift truck in perfect working condition, with battery weight corresponding to the values given in 6.5

In accordance with VDI Guideline 2198 this specification sheet provides details of the standard truck only. Non-standard tyres, different masts, optional equipment, etc. may result in different values. The CARER products and specifications are subject to change without notice.